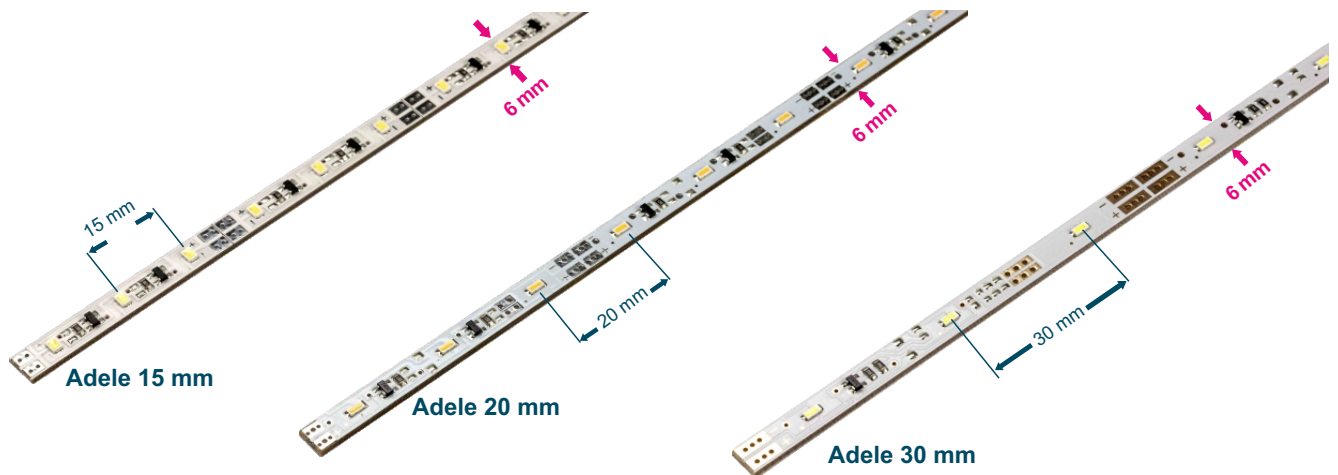


Adele 12 Volt · Starre Platinen in 6 mm Breite



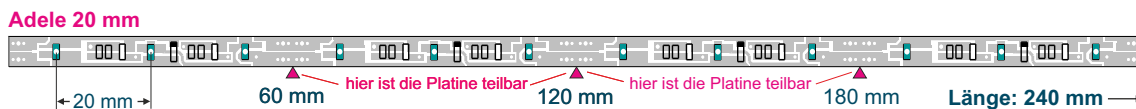
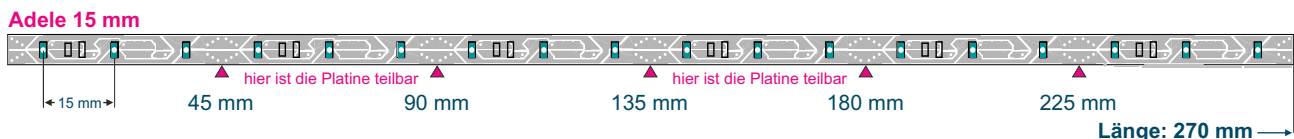
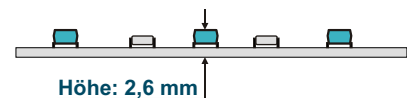
Mit der LED-Platine Adele bieten wir eine längliche 6 mm breite Platine für den Betrieb an 12 Volt.

Die Platine kann geteilt oder verlängert werden. Die maximalen Längen sind in der Tabelle unten aufgeführt.

Die kleinste teilbare Länge beträgt 45 mm (3 LEDs).
Der elektrische Anschluss erfolgt über stirnseitige Löt pads.

Lieferbar in weiß. Andere Farben auf Anfrage.

In folgenden Farbtemperaturen verfügbar: **3000 K, 4000 K, 5000 K und 6500 K**



Technische Daten der Platinen

Typ	Abmessungen (mm)	LED-Abstand (mm)	Anzahl LEDs	teilbar alle (mm)	Betriebsspg. (V)	Leistung je Meter (W)	maximale Länge je Einspeisung (m)
Adele 15 mm	270 x 6	15	18	45	12	13,3	3,0
Adele 20 mm	240 x 6	20	12	60	12	10,0	3,3
Adele 30 mm	270 x 6	30	9	90	12	6,7	5,0

Tamara Rainbow-RGB 12 V · the intelligent RGB LED circuit board

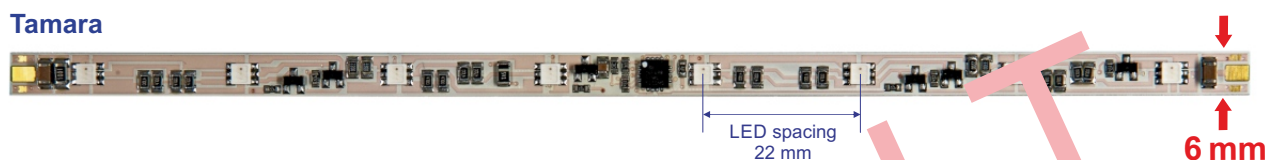
The LED circuit board **Tamara** is equipped with 8 RGB LEDs. The circuit board offers intelligent control capability.

Using a digital control signal, the LEDs on the circuit board can be controlled individually in groups of four, i.e. in two groups for the **Tamara**. Longer LED strips can be created by simply stringing the circuit boards together, allowing the colours to pass through one after the other. This distinguishes the **Tamara** from most other simple controllable RGB circuit boards.

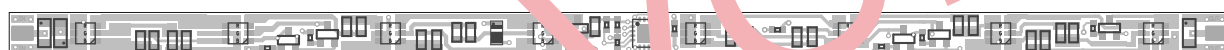


Thanks to its very narrow width the circuit board can be used in many applications such as our edge-lit Luminous Panels. For outdoor use the circuit boards can be protected against moisture in our Mini Profiles.

Tamara

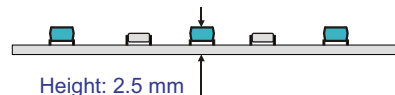


Tamara



Art. no. 5 7000 702

length: 176 mm



Connection:

Top side:



Underside:



Technical data (circuit board):

Typ	Dimensions (mm)	LED spacing (mm)	No. of LEDs	Operating voltage (V)	Wattage per c. board (W)	Wattage per meter (W)	Max. length per power supply (m)
Tamara	176 x 6	22 mm	8	12 V	2.2	12.5	2.00