

Cove Lighting

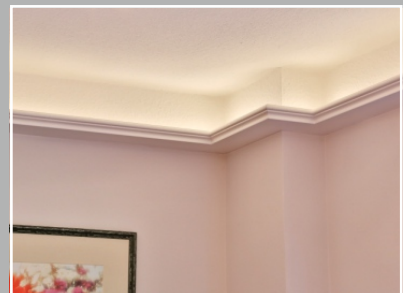
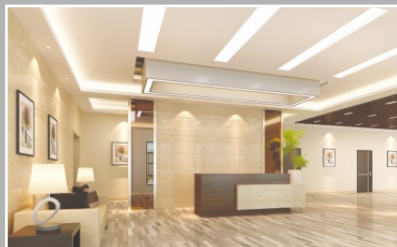
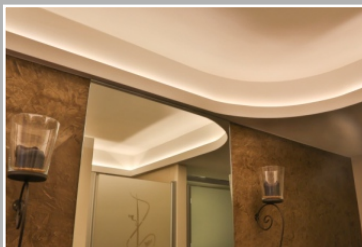


... with the LED Tube

Made to fit
Energy-efficient and reliable
Very flexible for corners and curves



- Attractive accent lighting in shops
- Feel-good lighting in hotel rooms
- Indirect gallery lighting
- Illumination of walls and ceilings
- For kitchens and bathrooms
- Corridor lighting



 Made in Germany 

hansen
technologie · elektronik · licht

Cove Lighting with the LED Tube

The **hansen** LED Tube is a patented lighting system based on a flexible chain of series-connected LEDs. Together with converters and accessories it forms a complete system which can be exactly adapted to various applications and local conditions. In addition, it is dimmable and allows the creation of attractive light scenes with colour changing effects.

Homogenous wall and ceiling lighting

Typical applications

LED light covers • Illuminated lines without dark zones • Shadow-free illumination • Subtle indirect light • For emphasizing architectural features • Accent lighting and room lighting • For creative light planning • For ceilings, walls and recesses • Floor cove lighting • For indoor and outdoor use • Installation in angular, circular or wave-like shapes ...

All this can be implemented with our LED Tube system.

Other special features of the LED Tube system

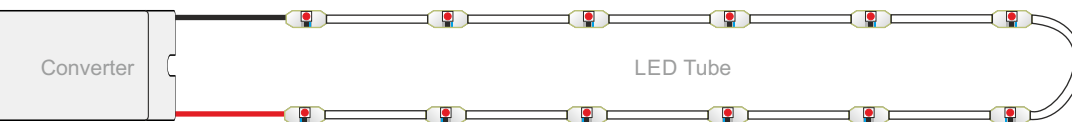
- Highly flexible, energy-saving and cost-efficient
- Quick and easy to install
- Various light colours and colour temperatures (cool to warm white)
- LED power and LED spacing can be specified individually
- Mounting accessories and converters available from stock
- Delivery within 5 to 10 days

Power consumption

Standard LEDs 3 watts per metre
Power LEDs 5 watts per metre

50 mA / 100 mA

Dimmable and controllable



Extremely reliable and robust

Ideal for curves, corners and angles



The flexible **LED Tube** ensures uniform illumination around corners and curves. With its flexibility, robustness and extreme reliability it has proven itself in numerous cove lighting applications.

