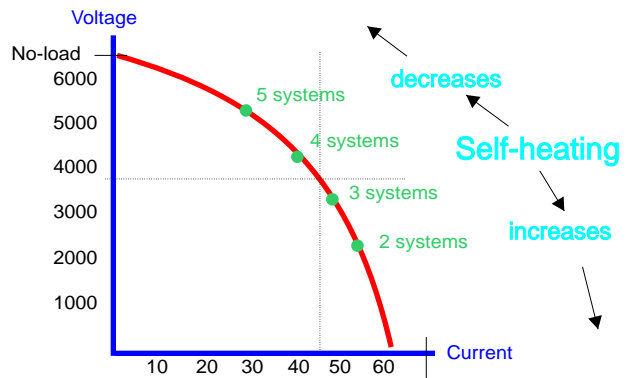
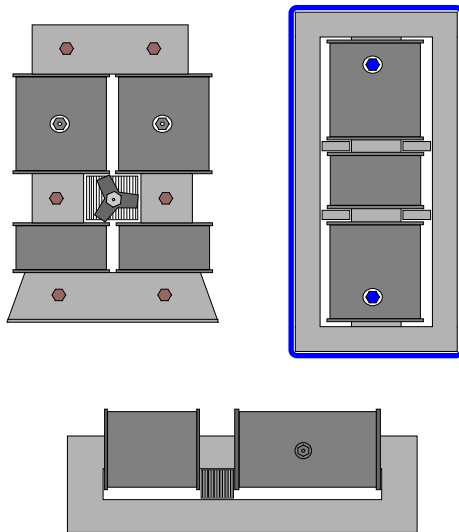


## Self-Heating of Transformers

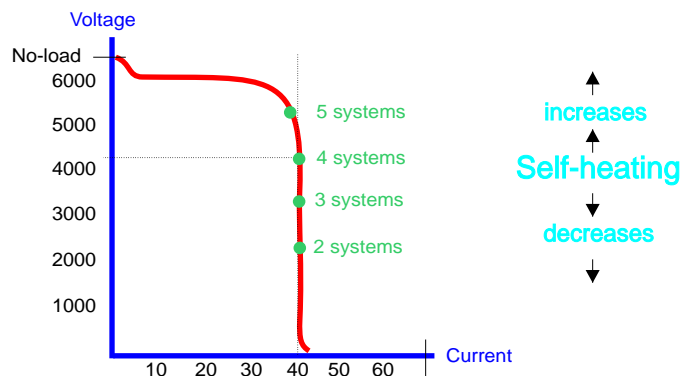
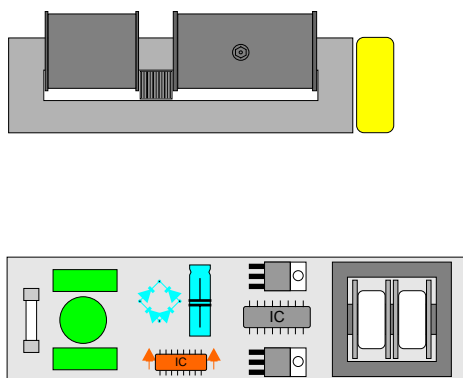
### Operating temperature of core & coil transformers



**Warning:**  
The self-heating increases when shorter tube loads are connected.

**Service life is reduced!**

### Operating temperature of EVGs or constant-current Transformers



**In case of short tube loads, the self-heating does not increase, but decreases.**

**Thermal overheating due to low loads cannot occur.**