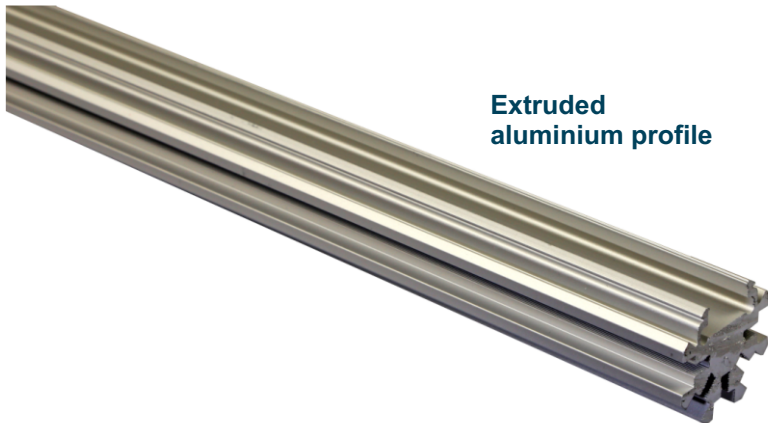
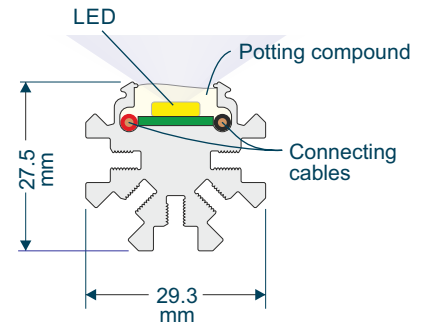


## Star Profile



Extruded aluminium profile



Cross-section and dimensions

### Technical description

The **hansen Star Profile** is a light system designed for the illumination of objects and/or for room lighting purposes.

An extruded aluminium profile forms the basis of the system. This profile is cut to length according to customer specification. The maximum possible length in one piece is 4,800 mm.

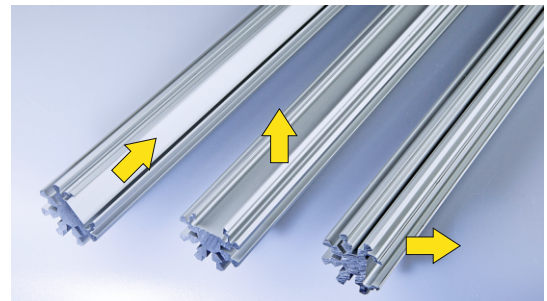
The profile's star-shaped cross-section allows different mounting options while the profile itself serves as a good heat sink for the powerful LEDs.

The profile's upper channel provides the space for the LEDs, lenses and cables. This channel is completely sealed with a transparent potting compound making the Star Profile suitable for indoor and outdoor applications.

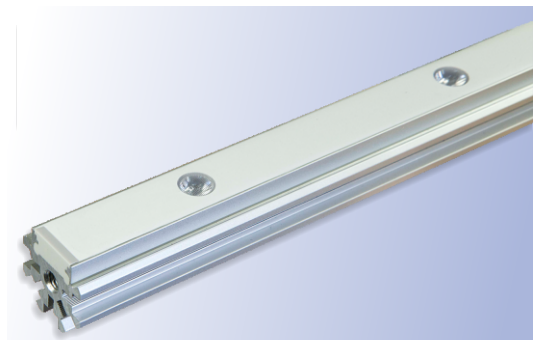
Depending on the application, the profile can be equipped with different LEDs:

- If directional light is needed for the illumination of objects, it is advisable to use individual LEDs with a higher rating equipped with lenses. Typical applications are the illumination of advertising signs or the decorative illumination of facades.
- For room lighting purposes it is better to use a larger number of smaller LEDs arranged in a row. With the diffusing cover, a continuous illuminated line can be created. Typical applications are the lighting of rooms or workplace or the replacement of fluorescent tubes.

Different converters are available to power the LEDs. The converters are installed outside the **Star Profile**.



The Star Profile can be installed at different angles allowing the LEDs to shine towards the top, the side or at an angle of 45°.



**Illumination:** Individual LEDs with lenses



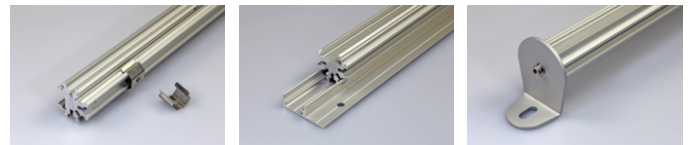
**Lighting:** LED strip with diffusing cover

## Star Profile

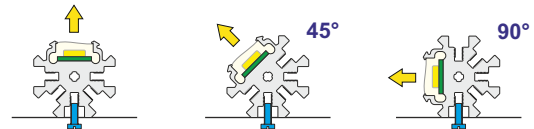
### **Mounting and fixing**

There are four possibilities to install the **LED Star Profile**:

- M3 screws using the longitudinal thread
- Spring steel mounting brackets
- Mounting profile
- Angle brackets for the profile ends



**Mounting bracket    Mounting profile    Angle bracket**



**Screw mounting using the M3 longitudinal thread**

### **Available lengths**

The profile length can be specified by the customer. The maximum available length is 4,800 mm.

### **Light colours of the LEDs**

The **Star Profile** can be supplied with the following LED light colours for illumination and lighting purposes:

3,000 K (warm white) | 4,000 K | 5,000 K | 6,500 K (cool white)

Available in the following colour temperatures

3000 K | 4000 K | 5000 K | 6500 K

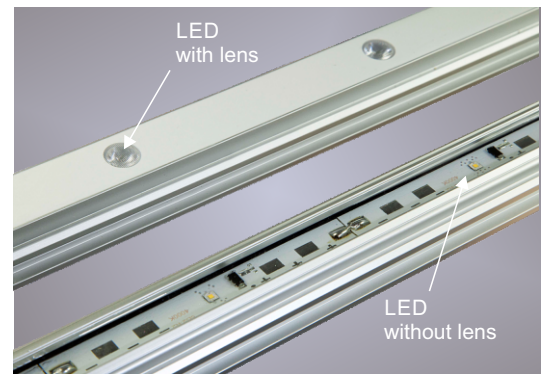
### **LEDs for illumination applications**

The illumination of objects such as advertising signs requires a huge amount of light. The High-Power LEDs in the **Star Profile** can be operated with 500 mA, which is equivalent to approx. 1.5 watts per LED.

In addition, the light should be focused onto the respective object surface. For this purpose, lenses with radiation angles of 40° or 23 x 45° can be supplied. Without lenses the radiation angle is 120°.

Technical data of a single High-Power LED (6,500 K):

Operating current: 500 mA  
Luminous flux: 199 lm  
Luminous efficacy: 130 lm/W



**Illumination: High-Power LEDs with/without lens**

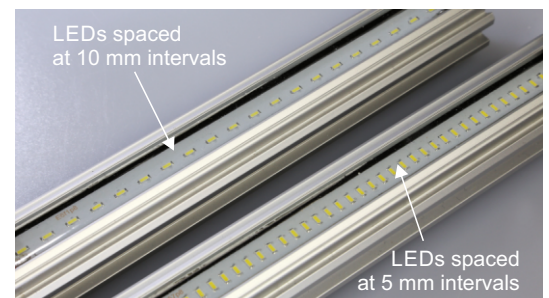
### **LEDs for lighting applications**

If the **Star Profile** is to be used for lighting purposes, e.g. replacing conventional fluorescent tubes, it is sensible to use many smaller LEDs arranged in a row.

The LEDs are spaced at 10 mm (or 5 mm) intervals. The light-diffusing cover creates a continuous illuminated line without any visible "hot spots".

Technical data of 10 LEDs (5,000 K):

Operating current: 500 mA  
Luminous flux: 163 lm  
Luminous efficacy: 112 lm/W



**Lighting: 1.5 watts LED modules**