

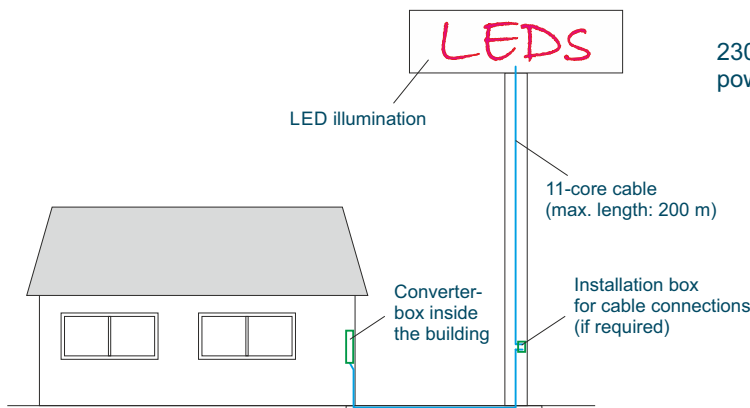
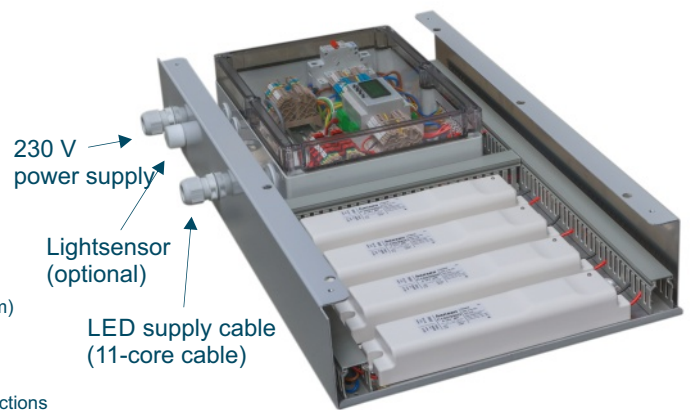
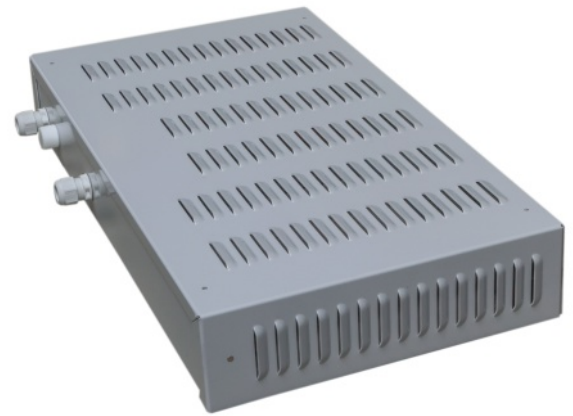
## Converter box, 4-bay

The converter box is a protective housing for power supply units, especially for LED converters. It allows converters, mains filters, dimmers and the associated cable connections to the series-connected LEDs (LED Tube) to be professionally installed and housed.

The converter box was specially designed for large, professionally built illuminated advertising installations and allows the converters to be accommodated outside the illuminated body.

The drawing below shows the example of an LED-illuminated pole-mounted advertising sign. The converters are installed in the box inside the adjacent building and connected to the LEDs by means of a special 11-core cable.

The maximum allowable distance between the illuminated sign and the converter box is 200 m.



When fully equipped with five C100/990D MP converters, up to 1,320 LEDs can be operated with one converter box and one connection cable.

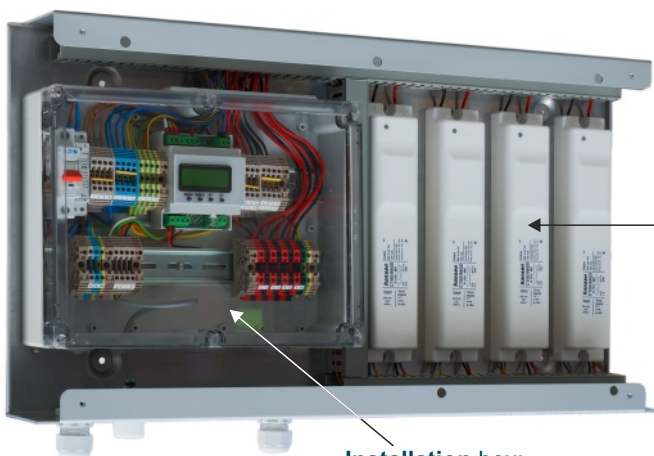
**This corresponds to an illuminated area up to 41.5 m<sup>2</sup>.**  
(depending on the LED density)

### Technical Data:

|                 |                 |
|-----------------|-----------------|
| Width:          | 660 mm          |
| Height:         | 360 mm          |
| Depth:          | 100 mm          |
| Weight (empty): | 4.3 kg          |
| Material:       | Aluminium sheet |

Order no (empty): 5 0008 894

CE IP 65



4 x C100/990D MP (dimmable)

### Installation box:

- Incoming mains cable with circuit breaker
- Converter mains connection
- Dimmer for control voltage 0-10 volts



Technical modifications reserved. Content is protected by copyright.

August 2024

L123e-4er/08/2024