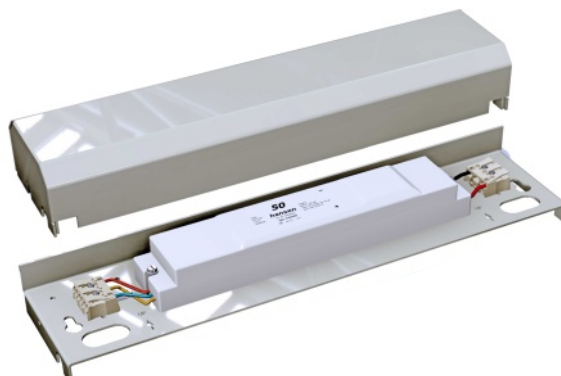


Converter housing for single converters

Made of aluminium sheet and painted light grey, the converter housing is designed to accommodate a single converter or power supply unit with a power rating of up to 100 W.

The housing is **IP44-protected** and designed for wall-mounting on building facades.

The unit can be supplied either as empty housing with pre-installed terminals or complete with connecting terminals and pre-installed converter.



IP 44

Length: 420 mm

Width: 100 mm

Height: 60 mm

Converter housing, empty

Artikel-Nr.

5 0009 000

Converter housing
equipped with a pre-assembled
converter

5 0009 001