

Description

Converter Cabinet

The converter cabinet was developed especially for professionally large illuminated signage systems. It is designed to enable the converter to be accommodated outside the illuminated advertising or lighting system.

Example advertising tower: the illuminated advertising including the LEDs is clearly visible at the top of the tower. The entire "technology" is located at the bottom of the tower base in the converter cabinet, i.e. easily accessible at "eye level".

In addition to the converters, all other technical devices are housed in the converter cabinet, e.g. circuit breakers, controllers and terminal blocks for connection to the power supply and the LEDs.



Converter Cabinet ... for up to 10 converters

Technical Data:

Type:	ES-411
Width:	785 mm
Height (without base):	1,100 mm
Depth:	320 mm
Material:	GRP plastic
Protection class:	IP44

Converter Cabinet ... for up to 16 converters

Technical Data:

Type:	ES-412
Width:	1,115 mm
Height (without base):	1,100 mm
Depth:	320 mm
Material:	GRP plastic
Protection class:	Ip44

Converter Cabinet ... for up to 24 converters

Technical Data:

Type:	ES-413
Width:	1,445 mm
Height (without base):	1,100 mm
Depth:	320 mm
Material:	GRP plastic
Protection class:	IP44

Base variants

The converter cabinet is supplied as standard with a concrete base for the on-site foundation. Alternatively, wall brackets or recessed plinths can also be used.



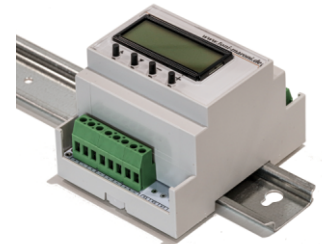
Base for concrete structure

Controllers

For dimmable systems, the following control units can be used for brightness regulation.



Controller 0-10 V
potentiometer DIN rail



Light-sensitive controller
oder
Light-sensitive controller with timer